



EpsonNet Print

All rights reserved. No part of this publication may be reproduced, stored in a retrieval system, or transmitted in any form or by any means, electronic, mechanical, photocopying, recording, or otherwise, without the prior written permission of Seiko Epson Corporation. The information contained herein is designed only for use with this Epson product. Epson is not responsible for any use of this information as applied to other products.

Neither Seiko Epson Corporation nor its affiliates shall be liable to the purchaser of this product or third parties for damages, losses, costs, or expenses incurred by purchaser or third parties as a result of: accident, misuse, or abuse of this product or unauthorized modifications, repairs, or alterations to this product, or (excluding the U.S.) failure to strictly comply with Seiko Epson Corporation's operating and maintenance instructions.

Seiko Epson Corporation shall not be liable against any damages or problems arising from the use of any options or any consumable products other than those designated as Original Epson Products or Epson Approved Products by Seiko Epson Corporation.

EPSON and EPSON ESC/P are registered trademarks and EPSON ESC/P 2 and EPSON Stylus are trademarks of Seiko Epson Corporation.

Microsoft, Windows, Windows NT, and Internet Explorer are registered trademarks of Microsoft Corp.

General Notice: Other product names used herein are for identification purposes only and may be trademarks of their respective owners. Epson disclaims any and all rights in those marks.

Copyright © 2004 by Seiko Epson Corporation, Nagano, Japan.

User's Guide

Contents

Introduction

About This Guide.....	3
Notes.....	3
System Requirements	4

Chapter 1 Using EpsonNet Print

Installing EpsonNet Print.....	5
Adding a Port Using Printer's Properties Screen	6
Adding a Port Using the Add Printer Wizard (Windows XP/Server 2003/2000/NT 4.0).....	10
Configuring the Printer Port	15
Installing the Printer Driver	17

Chapter 2 Uninstalling EpsonNet Print

Uninstalling EpsonNet Print	18
Windows Me/98/95/2000/NT 4.0	18
Windows XP/Server 2003	18

Introduction

EpsonNet Print is a utility program that provides peer to peer printing to Epson printers on the TCP/IP network.

By using EpsonNet Print, you can find a printer located in the same segment or beyond a router. You can select LPR standard printing, LPR enhanced printing, or High-speed printing.

About This Guide

This guide contains information on using EpsonNet Print.

For information about your printer, see the manual shipped with your printer.

Note:

Some screen shots in this guide shows a printer name different from your printer. This difference does not change the instructions.

Notes

Notes contain important information and useful tips on using this software.

System Requirements

EpsonNet Print supports the following environments.

Operating systems	Windows Me, 98, 98 Second Edition, 95 OSR2 Windows XP (with Service Pack 1 or higher) Windows Server 2003 Windows 2000 (with Service Pack 4 or higher) Windows NT 4.0 (with Service Pack 6 or higher)
CPU	Pentium II 400 MHz or better recommended
Memory	64 MB or more
Hard disk space	20 MB or more
Display	800 × 600 screen resolution, 256 color or more

Using EpsonNet Print

This chapter explains how to install EpsonNet Print, and how to create the script file.

Installing EpsonNet Print

Follow the steps below to install EpsonNet Print. Be sure to install it on a computer connected to the network.

1. Double-click ENPE.EXE.
2. Click Next in the Welcome dialog box.
3. Read the License Agreement, and then click Yes.
4. Click Yes in the message dialog box.

Note:

If EpsonNet Direct Print (the older version of EpsonNet Print) is installed on your computer, a message appears. Click OK to uninstall it before installing EpsonNet Print.

5. Click Install.
6. Click Yes to view the Readme file; otherwise, select NO.

Your computer is now set up to print using LPR via EpsonNet Print. See the next section to set up your printer.

Adding a Port Using Printer's Properties Screen

You need to add a port for use by a printer, which can be located either in the same segment or beyond a router.

Note:

- ❑ *Be sure that the computer is connected to the network and TCP/IP is correctly set.*
- ❑ *Be sure that the target Epson printer driver is installed on the computer.*
- ❑ *A valid IP address must be assigned to the printer.*

1. **For Windows Me/98/95/2000/NT 4.0:** Click Start, point to Settings, and then select Printers.

For Windows XP/Server 2003: Click Start and then Printers and Faxes.

2. Right-click the target printer icon, and then select Properties.
3. **For Windows Me/98/95:** Click the Details tab, and then click the Add Port button. Select the Other radio button, and then select EpsonNet Print Port. Click OK.

For Windows XP/Server 2003/2000/NT 4.0: Click the Ports tab, and then click the Add Port button. Select EpsonNet Print Port, and then click the New Port button.

4. Click the Browse button to find the printer. Then, go to the next step.

Or, you can enter the host name or IP address of the printer (up to 127 characters). The following example shows how you can enter the information:

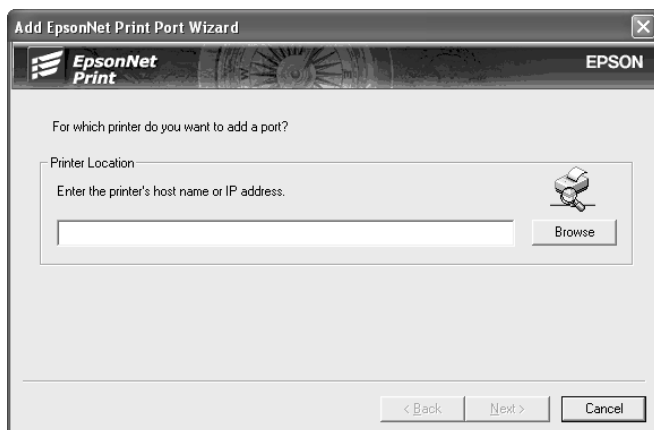
IP address: 192.168.100.201

Host name: AL-C2000-XXXXXX

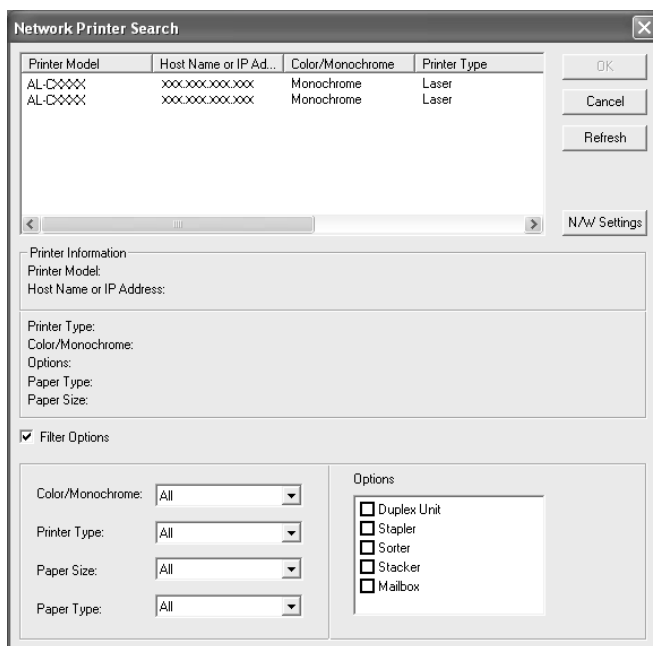
FQDN: AL-C2000-XXXXXX.epson.com

(XXXXXX are the last 6 digits of the MAC address.)

Then go to step 6.



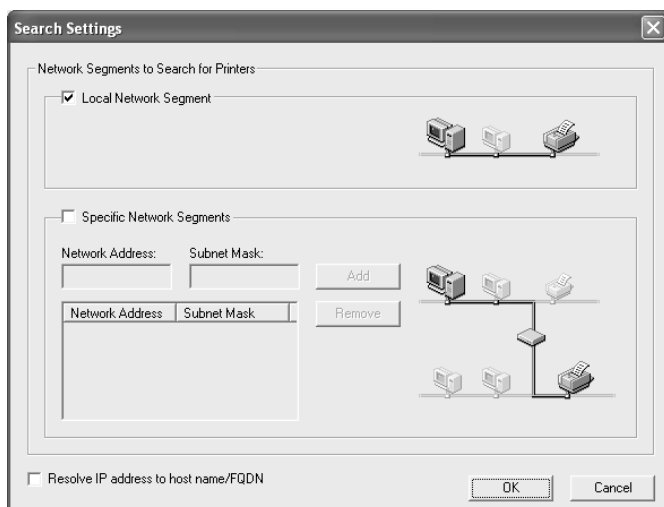
5. Select the target printer, and then click OK.



Note:

- ❑ *If the target printer is not in the list, click the Refresh button to search the printers using new parameters.*
- ❑ *If you want to search specific printers, select the Filter Options check box, and then specify your favorable options.*

- ❑ *If you want to search printers in other segments, click the N/W Settings button. Select the Specific Network Segments check box, and then enter the network address and subnet mask of the network segment for the search. Then click the Add button. If you want to resolve the IP address to the host name or FQDN, select the Resolve IP address to host name/FQDN check box.*



6. Click Next.
7. Click Finish to complete adding a port.

Now, the printer is ready for peer to peer printing. To configure the printer port, go to “Configuring the Printer Port” on page 15.

Adding a Port Using the Add Printer Wizard (Windows XP/Server 2003/2000/NT 4.0)

If you are using Windows XP/Server 2003/2000/NT 4.0, you can also add a port using the Add Printer Wizard. Follow the steps below to add a port using the Add Printer Wizard.

1. **For Windows XP:** Click Start and then Printers and Faxes. Under Printer Tasks, click Add a printer to start the Add Printer Wizard.

For Windows Server 2003: Click Start and then Printers and Faxes. Double-click Add Printer in the Printers folder to start the Add Printer Wizard.

For Windows 2000: Click Start, point to Settings, and then select Printers. Double-click Add Printer in the Printers folder to start the Add Printer Wizard.

For Windows NT 4.0: Click Start, point to Settings, and then select Printers. Double-click the Add Printers icon.

2. Click Next.

3. **For Windows XP/Server 2003:** Click Local printer attached to this computer, clear the Automatically detect and install my Plug and Play printer check box, and then click Next. Select the Create a new port radio button, and then select EpsonNet Print Port from the list. Click Next.

For Windows 2000: Click Local printer, clear the Automatically detect and install my Plug and Play printer check box, and then click Next. Select the Create a new port radio button, and then select EpsonNet Print Port from the list. Click Next.

For Windows NT 4.0: Select the My Computer radio button, and then click Next. Click the Add Port button in the Add Printer wizard dialog box. Select EpsonNet Print Port from the Available Printer Port list, and then click the New Port button.

4. Click the Browse button to find the printer. Then, go to the next step.

Or, you can enter the host name or IP address of the printer (up to 127 characters). The following example shows how you can enter the information:

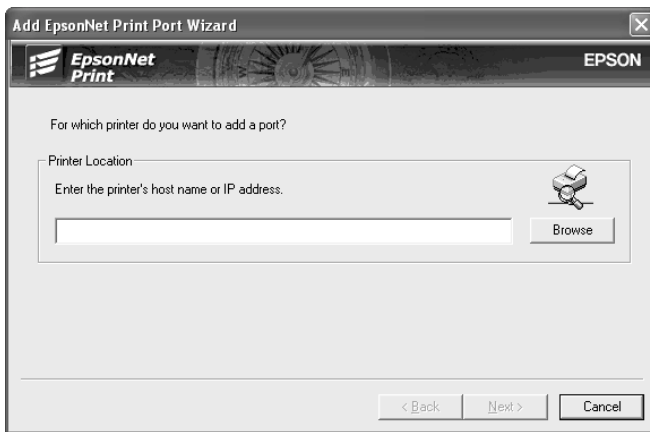
IP address: 192.168.100.201

Host name: AL-C2000-XXXXXX

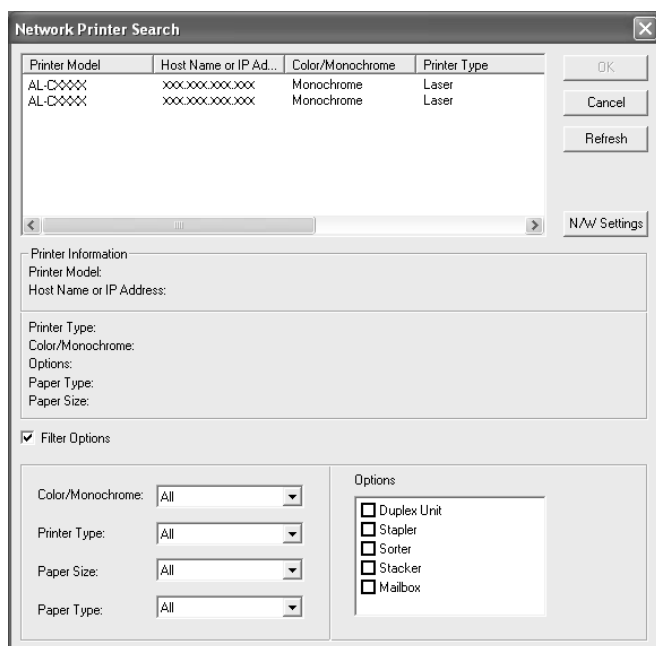
FQDN: AL-C2000-XXXXXX.epson.com

(XXXXXX are the last 6 digits of the MAC address.)

Then go to step 6.



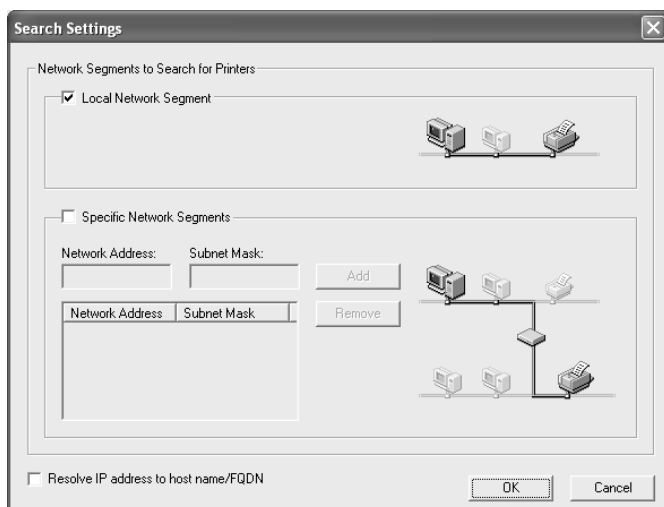
5. Select the target printer, and then click OK.



Note:

- ☐ If the target printer is not in the list, click the Refresh button to search the printers using new parameters.
- ☐ If you want to search specific printers, click the Filter Options check box, and then specify your favorable options.

- ❑ *If you want to search printers in other segments, click the N/W Settings button. Select the Specific Network Segments check box, and then enter the network address and subnet mask of the network segment for the search. Then click the Add button. If you want to resolve the IP address to the host name or FQDN, select the Resolve IP address to host name/FQDN check box.*



6. Click Next.
7. Click Finish to complete adding a port.
8. Select the model name of the printer, and then click Next.

Note:

If the Add Printer wizard asks you to select either Keep existing driver or Replace existing driver, be sure to select the Replace existing driver radio button. Click Next.

9. Enter the printer name, and then click OK.

10. Select the Do not share this printer radio button (Windows XP/Server 2003/2000) or the Not shared radio button (Windows NT 4.0). Click Next.
11. Select Yes to print a test page; otherwise, select No. Click Next.
12. Click Finish to complete the installation.

Note:

If the printer software CD-ROM is required to install the printer driver, see "Installing the Printer Driver" on page 17.

Now, the printer is ready for peer to peer printing. To configure the printer port, go to "Configuring the Printer Port" on page 15.

Configuring the Printer Port

Follow the steps below to configure the printer port. The printing speed differs depending on your selection.

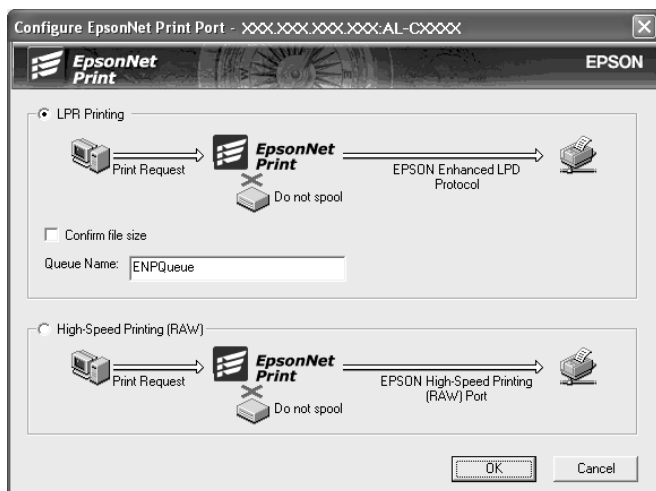
1. **For Windows Me/98/95/2000/NT 4.0:** Click Start, point to Settings, and then select Printers.

For Windows XP/Server 2003: Click Start and then Printers and Faxes.

2. Right-click the target printer, and then click Properties.
3. **For Windows Me/98/95:** Click the Details tab, and then click the Port Settings button.

For Windows XP/Server 2003/2000/NT 4.0: Click the Ports tab, and then click the Configure Port button.

4. Make the appropriate settings for the desired port.



LPR enhanced printing:

Select the LPR Printing radio button, and specify the queue name (up to 32 characters). LPR enhanced printing sends a print job to the target network printer without spooling all of the print data. LPR enhanced printing is faster than LPR standard printing.

LPR standard printing:

Select the Confirm file size check box, and specify the queue name (up to 32 characters). Print data is spooled by the computer before being sent to the target network printer.

Note:

When the print data size is 20 MB or more, we recommend you use LPR enhanced printing.

High-Speed printing:

Select the High-Speed Printing (RAW) radio button. The Epson high-speed printing port sends a print job to the target network printer without spooling all of the print data. High-Speed printing is faster than the other two printing methods.

5. Click OK.

If you select the High-Speed Printing (RAW) radio button and if the printer does not support High-Speed printing, an error message appears. Follow the message to remedy the problem.

Installing the Printer Driver

Install the printer driver that comes with your printer.

1. Insert the Software CD-ROM shipped with the printer.
2. Close the EPSON Installation Program screen if it appears.
3. Click the Have Disk button. The Install From Disk dialog box appears.
4. Click Browse.
5. Select the CD-ROM drive for Drives, and double-click the appropriate folder for your operating system. Click OK.
6. Click OK in the Install From Disk dialog box.
7. Select the model name of the printer, and then click Next.

Note:

If the Add Printer wizard asks you to select either Keep existing driver or Replace existing driver, be sure to select the Replace existing driver radio button. Click Next.

8. Click Finish and follow the on-screen instructions to complete the setup.

Uninstalling EpsonNet Print

Uninstalling EpsonNet Print

Follow the steps below to uninstall EpsonNet Print.

Windows Me/98/95/2000/NT 4.0

1. Click Start, point to Settings, and then select Control Panel.
2. Double-click the Add/Remove Programs icon.
3. Select EpsonNet Print, and then click the Add/Remove button (Windows Me/98/95/NT 4.0) or the Change/Remove button (Windows 2000).
4. Follow the on-screen instructions to complete uninstallation.

Windows XP/Server 2003

1. Click Start, click Control Panel, and then click Add or Remove Programs.
2. Select EpsonNet Print, and then click the Change/Remove button.
3. Follow the on-screen instructions to complete uninstallation.

EPSON OVERSEAS MARKETING LOCATIONS

Epson America, Inc.

3840 Kilroy Airport Way
Long Beach, CA 90806
Phone: (562) 981-3840
Fax: (562) 290-5220

EPSON UK LTD.

Campus 100, Maylands Avenue,
Hemel Hempstead, Herts,
HP2 7TJ, U.K.
Phone: (+44) 01442 261144
Fax: (+44) 01442 227227

EPSON DEUTSCHLAND GmbH

Zülpicher Straße 6,
40549 Düsseldorf Germany
Phone: (0211) 56030
Fax: (0211) 5047787

EPSON FRANCE S.A.

68 bis, rue Marjolin
92300, Levallois-Perret, France
Phone: 33.1.41.86.26.56
Telex: 610657

EPSON AUSTRALIA PTY. LTD.

70 GIBBES STREET,
CHATSWOOD 2067 NSW.
Phone: 2-9903-9000
Fax: 2-9903-9177

EPSON SINGAPORE PTE. LTD.

No. 1 Temasek Avenue #36-00
Millenia Tower, Singapore 039192
Phone: (065) 633 77 911
Fax: (065) 633 41 185

EPSON HONG KONG LTD.

20/F, Harbour Centre,
25 Harbour Road,
Wanchai, Hong Kong
Phone: 2585-4300
Fax: 2827-7083

EPSON TAIWAN TECHNOLOGY & TRADING LTD.

14F, No.7, Song Ren Road, Taipei,
Taiwan 110
Phone: (02) 8786-6688
Fax: (02) 8786-6633

EPSON ITALIA S.p.A.

V.le F.lli Casiraghi 427
20099 Sesto S.Giovanni
MI, Italy
Phone: +3902262331
Fax: +39022440750

EPSON IBERICA S.A.

Av. de Roma, 18-26
08290 Cerdanyola del Valles
Barcelona, Spain
Phone: 582. 15.00
Fax: 582. 15.55

**SEIKO EPSON CORPORATION
(Hirooka Office)**

80 Harashinden, Hirooka
Shiojiri-shi, Nagano-ken
399-0785 Japan

EPSON PORTUGAL, S.A.

R. do Progresso, 471, 1º Perafita
4460 Matosinhos, Portugal
Phone: (02) 996 14 02
Fax: (02) 996 14 11