

TM-C3520 使用说明书 User's Manual



SC

保留备用。安装、使用产品前请阅读使用说明。

版权所有。没有精工爱普生公司的正式书面许可，本手册不得复制，不得保存在可再生系统内，或以任何形式任何手段进行电子、机械转载、复印、录制等。使用本手册内的有关信息无须授权。在编辑本手册时我们考虑到了各项防备措施，对于手册中的错误和遗漏，精工爱普生公司概不负责。同时，也不负责由于使用本手册中的信息内容造成的损失。

本产品由于用户或第三方造成的事故、错误使用和乱用，以及擅自改装、修理或变更式样等，不严格遵守精工爱普生公司的操作和维修要求（美国除外），引起的危害、损失、费用和付出款项等，不论是精工爱普生公司还是其它有关的集团公司，对于该顾客或第三方概不负有任何责任。

由于使用非正规爱普生产品或非精工爱普生公司指定许可的任何附件或任何消耗品，而造成的损失和故障，精工爱普生公司概不负责。

根据地区不同，产品内可能带有接口电缆。请使用该附带的电缆。

对于因使用Epson批准产品以外的接口电缆引起电磁干扰而导致的产品故障，Seiko Epson Corporation 不负有任何责任。关于批准电缆的详细信息请与Epson客服中心联系。

EPSON是Seiko Epson Corporation在日本、中华人民共和国及其它国家或地区的注册商标。

备注：本手册中的内容有可能发生变更，恕不事先通知。

Copyright© 2013 Seiko Epson Corporation. All rights reserved. 20130430

制造商：精工爱普生株式会社

地址：日本东京都新宿区西新宿2-4-1

安全注意事项

此部分介绍了有关确保安全和有效使用本产品的重要信息。请仔细阅读此部分，并妥善保管。

警告：

如果此设备冒烟、或产生强烈的气味、或发出不正常的噪声，应立即关闭设备的电源。继续使用将会导致火灾，请立即拔下电源插头，然后与经销商或Seiko Epson 的维修中心联系。

不要试图自行修理本产品。不正确的修理将是非常危险的。

不要拆开或修改本产品，本产品的损坏将可能导致人体受伤、火灾。

只能使用规定的AC适配器（EPSON AC Adapter, K（型号：M248A））。

连接到不适当的电源上可能会导致火灾。

请确认电源电缆符合相关的安全标准，并包括电源系统接地端子（PE 端子）。否则可能会导致电击。

不可将外物掉入设备中，外物掉入可能会导致火灾或电击。

如果有水或其他液体溅入本设备，应立即拔下电源插头，然后与经销商或Seiko Epson的维修中心联系。继续使用会导致火灾或电击。

请勿在本产品的内部及周围使用可燃性气体的喷雾器。否则可能造成火灾。

注意：

不要使用在本手册中没有提到的方法连接电缆，不同的连接方法可能会导致设备损坏或烧毁。

确定将本设备放置在稳固，稳定的水平面上，如果掉落，将导致破裂或引致受伤。

不要在高湿度或过多灰尘的环境中使用。过多的湿气和灰尘会导致设备损坏，起火或电击。

不要在本产品上放置重物，也不要站在或靠在本产品上，设备可能会掉落或滑倒，造成破裂和可能引致受伤。

为确保安全，在较长时间不使用前应拔下插头。

运输期间请勿从产品上拆下墨盒。

注意标签

产品上的注意标签表示如下安全注意事项。

注意：

小心自动裁纸刀的固定刀刃划伤手指。

使用限制

将本产品用于飞机、列车、船舶、汽车等的与运行直接相关的装置、防灾防盗装置、各种安全装置等要求机能、精度等具备高度可信性、安全性的用途时，为维持这些系统整体的可信性与安全，请采取故障自动防护设计及冗长设计等措施，在确保系统全体安全的基础上使用本公司产品。

EN

All rights reserved. No part of this publication may be reproduced, stored in a retrieval system, or transmitted in any form or by any means, electronic, mechanical, photocopying, recording, or otherwise, without the prior written permission of Seiko Epson Corporation. No patent liability is assumed with respect to the use of the information contained herein. While every precaution has been taken in the preparation of this book, Seiko Epson Corporation assumes no responsibility for errors or omissions. Neither is any liability assumed for damages resulting from the use of the information contained herein. Neither Seiko Epson Corporation nor its affiliates shall be liable to the purchaser of this product or third parties for damages, losses, costs, or expenses incurred by purchaser or third parties as a result of: accident, misuse, or abuse of this product or unauthorized modifications, repairs, or alterations to this product, or (excluding the U.S.) failure to strictly comply with Seiko Epson Corporation's operating and maintenance instructions. Seiko Epson Corporation shall not be liable against any damages or problems arising from the use of any options or any consumable products other than those designated as Original Epson Products or Epson Approved Products by Seiko Epson Corporation. Depending on the area, the interface cable may be included with the product. If so, use that cable. Seiko Epson Corporation shall not be held liable for any damage resulting from electromagnetic interference that occurs from the use of any interface cables other than those designated as Epson approved products.

EPSON is a registered trademark of Seiko Epson Corporation in Japan and other countries / regions. Microsoft, Windows, and Windows Vista are registered trademarks of Microsoft Corporation. The Ethernet interface model of this product includes software developed by the University of California, Berkeley, and its contributors. NOTICE: The contents of this manual are subject to change without notice.

Copyright © 2013 by Seiko Epson Corporation, Nagano, Japan.

Important Safety Information

This section presents important information intended to ensure safe and effective use of this product. Read this section carefully and store it in an accessible location.

Key to Symbols

The symbols in this manual are identified by their level of importance, as defined below. Read the following carefully before handling the product.

Warning:

Warnings must be followed carefully to avoid serious bodily injury.

CAUTION:

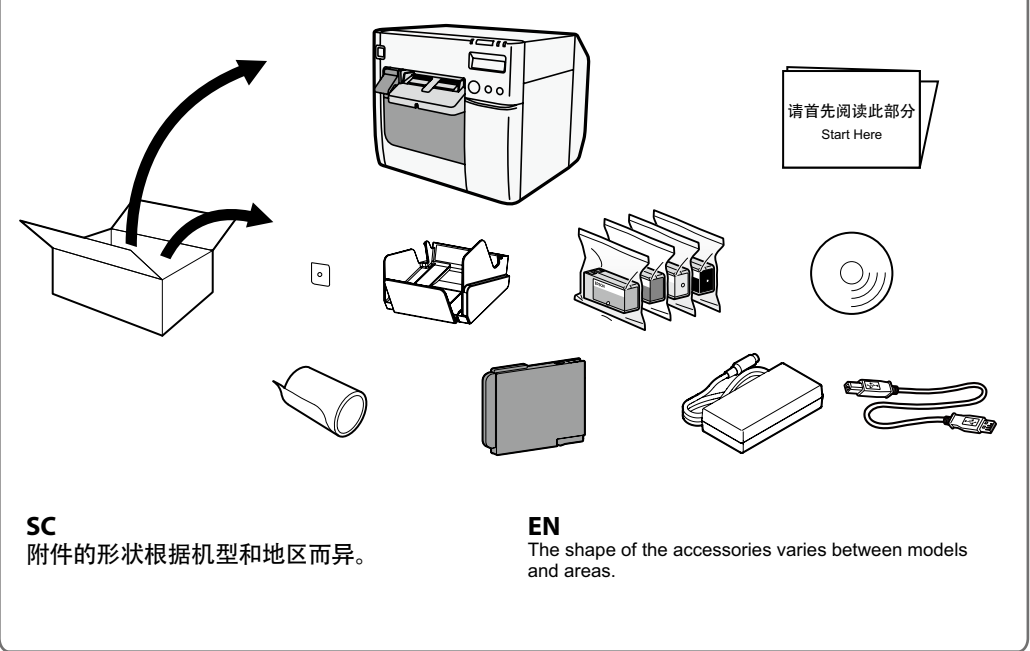
Cautions must be observed to avoid minor injury to yourself, damage to your equipment, or loss of data.

Warning:

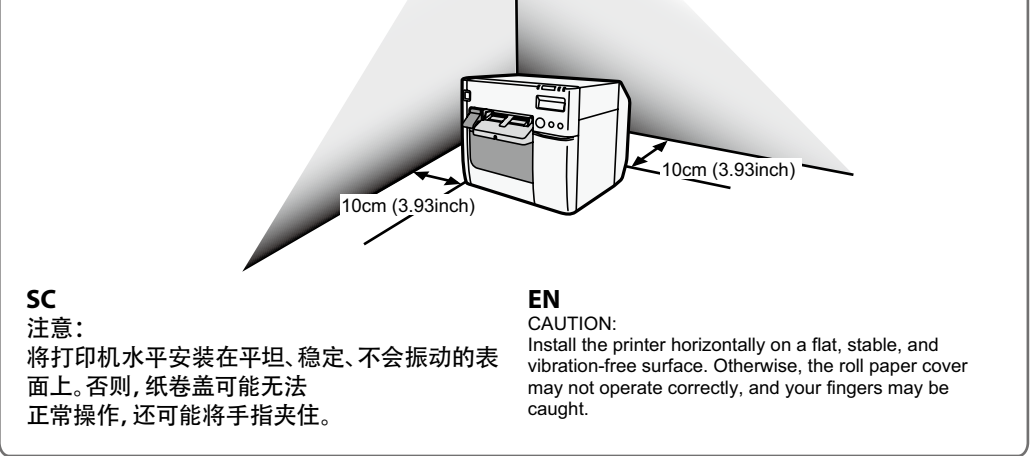
Shut down your equipment immediately if it produces smoke, a strange odor, or unusual noise. Continued use may lead to fire. Immediately unplug the equipment and contact your dealer or a Seiko Epson service center for advice.

Never attempt to repair this product yourself. Improper repair work can be dangerous. Never disassemble or modify this product. Tampering with this product may result in injury or fire. Use the specified AC Adapter, K (Model: M248A) only. Connection to an improper power source may cause fire. Be sure your power cable meets the relevant safety standards and includes a power-system ground terminal (PE terminal). Otherwise shock may result. If you acquire a system with different safety standards, use an AC cable that meets the acquired safety standards. Do not allow foreign matter to fall into the equipment. Penetration by foreign objects may lead to fire. If water or other liquid spills into this equipment, unplug the power cord immediately, and then contact your dealer or a Seiko Epson service center for advice. Continued usage may lead to fire. Do not use aerosol sprayers containing flammable gas inside or around this product. Doing so may cause fire. **CAUTION:** Do not connect cables in ways other than those mentioned in this manual. Different connections may cause equipment damage and burning. Be sure to set this equipment on a firm, stable, horizontal surface. The product may break or cause injury if it falls. Do not use in locations subject to high humidity or dust levels. Excessive humidity and dust may cause equipment damage or fire. Do not place heavy objects on top of this product. Never stand or lean on this product. Equipment may fall or collapse, causing breakage and possible injury. Do not remove the ink cartridge from the product when you ship it. Be sure to note the following when using the maintenance box: • Do not dismantle the Maintenance box. • Do not touch the IC chip on the cartridge. • Keep out of reach of children, and do not drink. • Do not reuse a maintenance box which has removed and detached a long period. **Caution Label** The caution label on the product indicates the following precaution. **CAUTION:** Take care not to injure your fingers on the fixed blade of the autocutter. **Restriction of Use** When this product is used for applications requiring high reliability / safety, such as transportation devices related to aviation, rail, marine, automotive, etc.; disaster prevention devices; various safety devices, etc.; or functional / precision devices, etc., you should use this product only after giving consideration to including fail-safes and redundancies into your design to maintain safety and total system reliability.

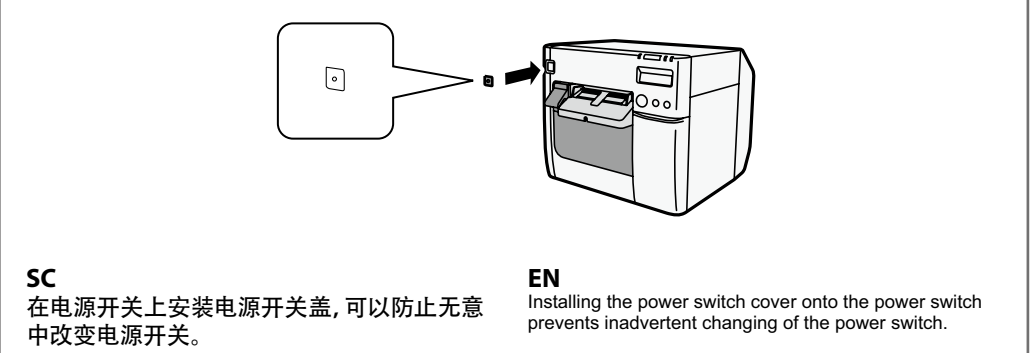
1 打开包装 Unpacking



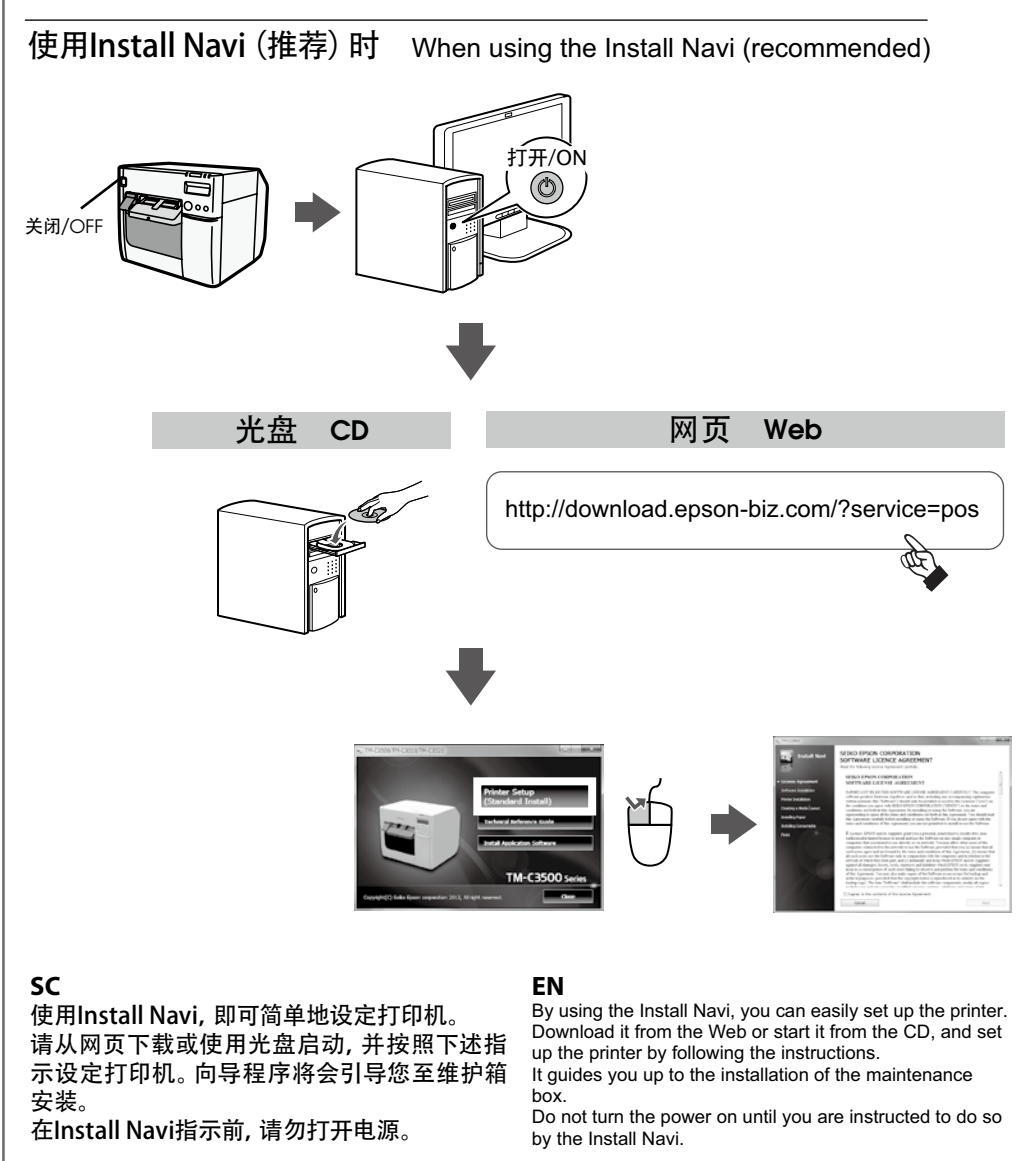
2 安装打印机 Installing the Printer



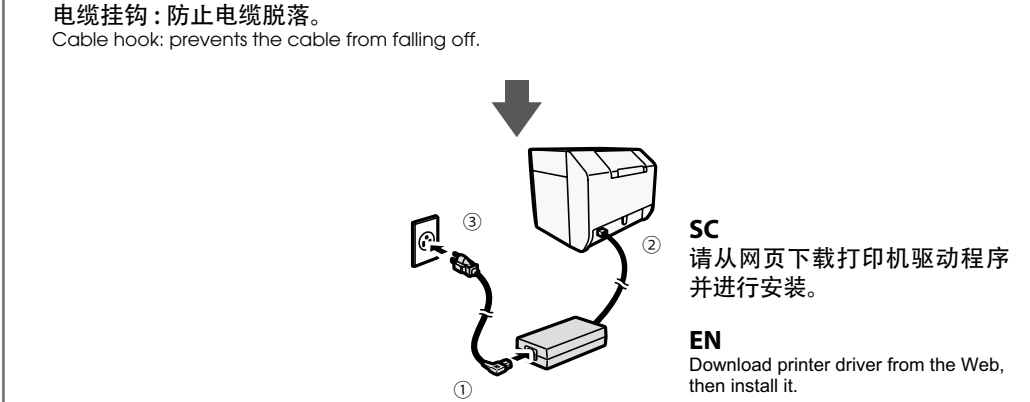
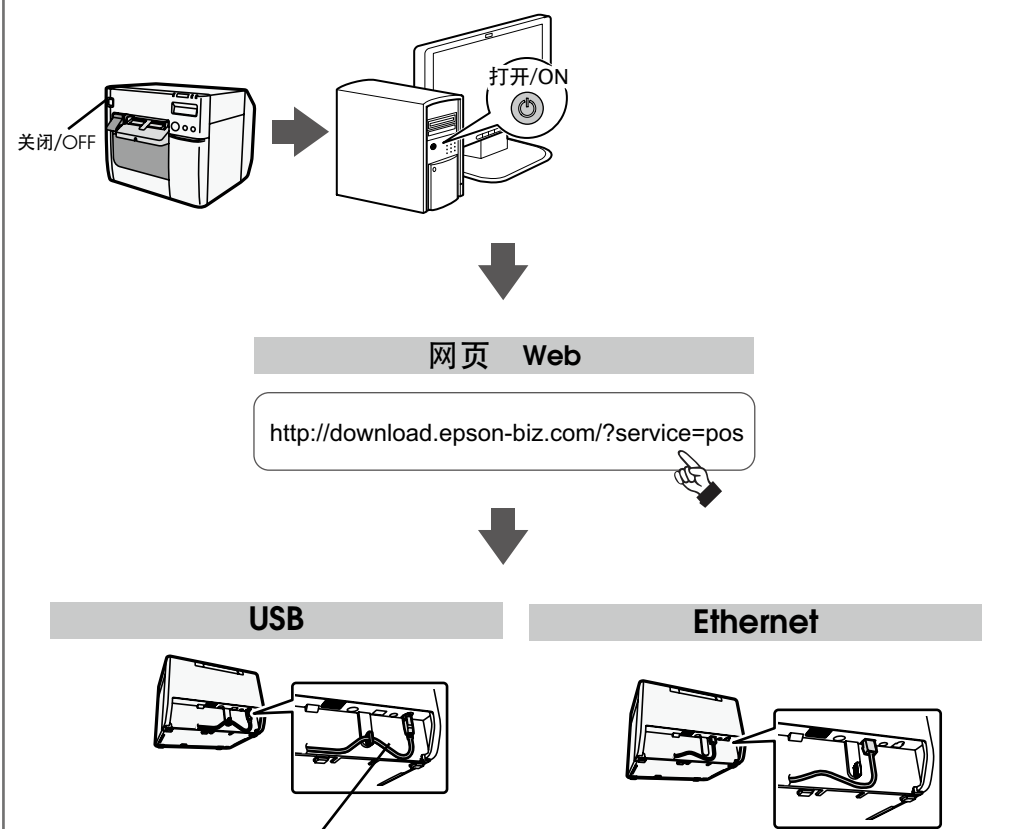
3 电源开关盖 Using the Power Switch Cover



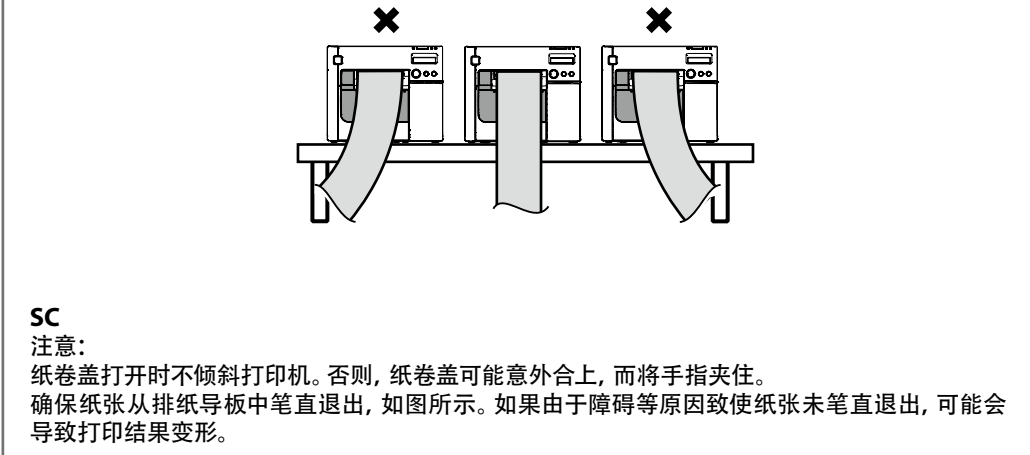
4 设定打印机 Set up the printer



不使用Install Navi时 When not using the Install Navi



5 安装/更换打印纸 Installing/Replacing Paper

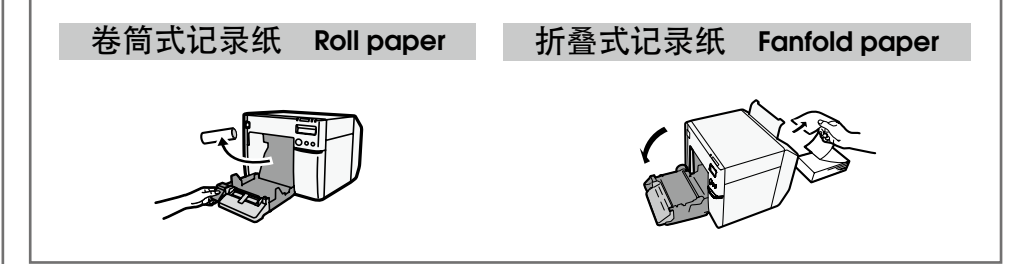


EN

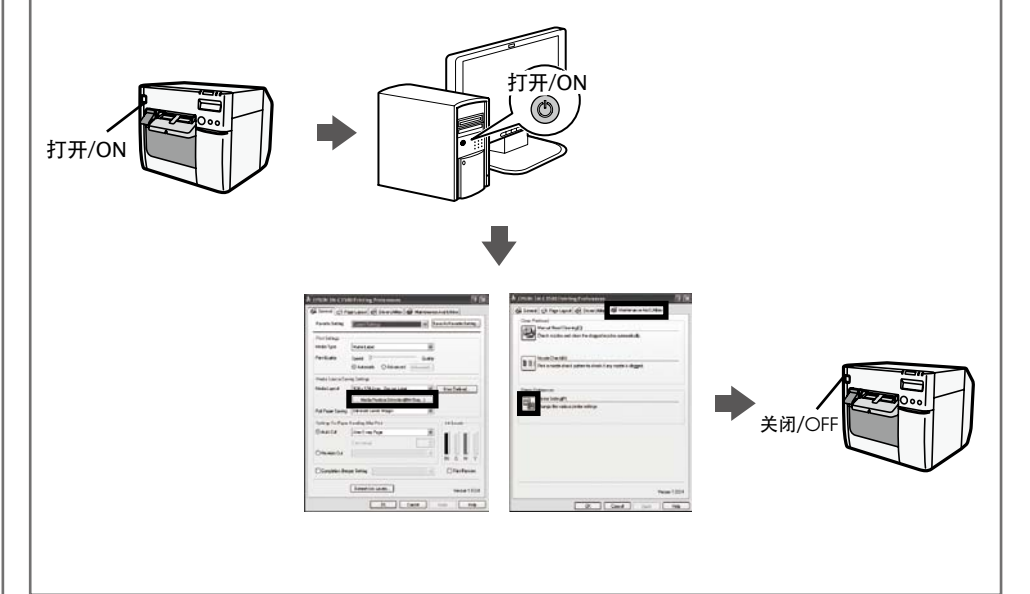
CAUTION:

Do not tilt the printer with the roll paper cover open. The roll paper cover may close unexpectedly, and your fingers may be caught. Make sure paper is ejected straight from the paper ejection guides, as shown in the illustration. If paper is not ejected straight due to such causes as an obstruction, the print result may be distorted.

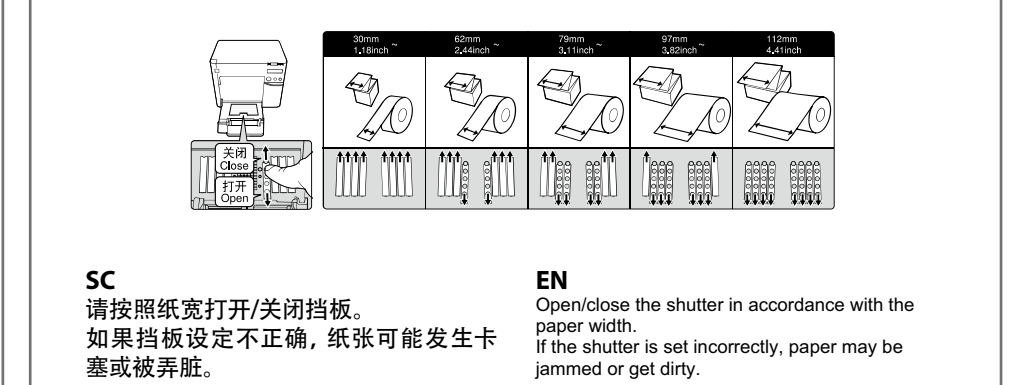
1 取出纸张 Removing paper



2 设定打印机驱动程序 Setting the printer driver



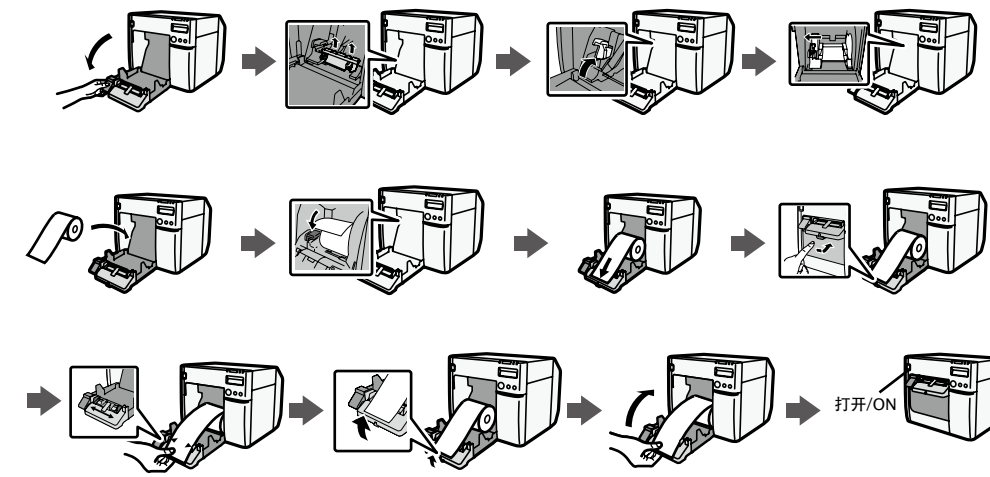
3 设定挡板 Setting the shutter



5 安装/更换打印纸 Installing/Replacing Paper

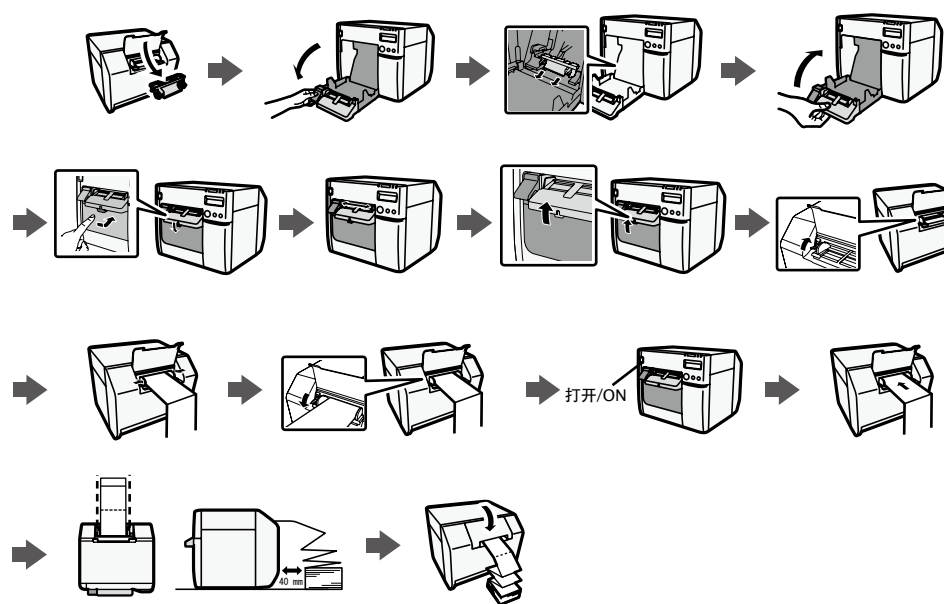
4 安装打印纸 Installing Paper

卷筒式记录纸 Roll paper



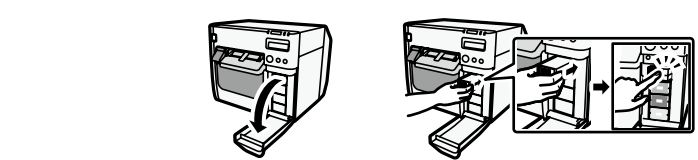
SC
注意：
仅在使用折叠式记录纸时，务必安装进纸导板。使用卷筒式记录纸时，请务必拆卸进纸导板。
切换卷筒式记录纸和折叠式记录纸时，请更改打印机驱动程序的媒体源设定。

折叠式记录纸 Fanfold paper



EN
CAUTION:
The paper feed guide should be attached to the printer only when you use fanfold paper. Be sure to remove the paper feed guide when you use roll paper.
When switching between the roll paper and fanfold paper, change the media source settings of printer driver.

6 安装/更换墨盒 Installing/Replacing the Ink Cartridge



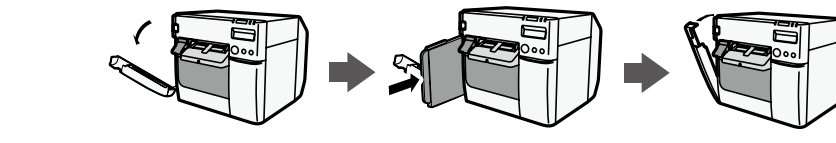
SC

注意：
请勿触摸墨盒上的IC芯片。否则可能造成操作/打印时的故障。
本产品使用带IC芯片的墨盒，以便显示各墨盒中的墨水量。进行拆除后再重新安装的墨盒仍可以使用。但是，对仅剩下少量墨水的墨盒进行拆除和重新安装后，该墨盒可能无法再使用。因为本产品会自动确认墨盒的可靠性，每当安装墨盒时，会消耗部分墨水。
请安装所有颜色的墨盒。在仅缺一个墨盒的状态下也不能进行打印。
为维持打印头的质量，墨盒会在墨水完全用尽前停止操作，因此已使用完毕的墨盒内也会残留少量墨水。
更换墨盒和清洁打印头时的维护操作中也会消耗所有颜色的墨水。
充填墨水（电源指示灯闪烁）时，请勿关闭本产品电源或打开墨盒盖。打开此盖会使墨水重新进行充填，导致消耗更多墨水。此外，该操作可能会引起打印时的故障。
进行黑白打印时，打印质量及打印头质量的维护动作中也会使用到所有颜色的墨水。
请勿拆卸墨盒。否则可能导致墨水飞溅到眼睛和皮肤上。请勿拆卸或改造墨盒。否则可能会引起打印时的故障。
使用旧的墨盒可能导致打印质量下降。请使用打开包装后6个月内的墨盒。每个墨盒的包装上都印有其使用期限。
万一墨水飞溅到皮肤、眼睛或嘴巴时，请采取以下措施：
• 墨水附着到皮肤上时，请立即用肥皂和水清洗该部分。
• 墨水飞溅到眼睛里时，请立即用清水清洗。置之不理可能导致眼睛充血或轻微发炎。如出现异常症状，请立即咨询医生。
• 墨水飞溅到嘴里时，请立即吐出并咨询医生。
在拆下的墨盒出墨口周边可能沾有墨水。请注意不要弄脏桌子或其它表面。
请勿拆除墨盒（更换时除外）。请在要将墨盒装入机器前才打开其包装。
请打开墨盒盖并等待至少4秒，直到内部动作停止。如果在4秒内取出墨盒，会有墨水喷出的风险。请勿用力摇晃墨盒。过度摇晃或用力按压两侧，可能会造成墨水泄露。请注意防止异物进入墨盒安装部位。否则可能造成打印时的故障。
第一次充填墨水（刚购买后）时，为充填打印头喷嘴（墨水喷孔）以进行打印准备，会消耗部分墨水。因此，与第二次后安装的墨盒相比，能够打印的纸张数量可能会少。
请按照您所居住的国家 and 地区的法律法规正确地处理废弃墨盒。
通过电源按钮关闭本产品时，打印头会自动被盖住，以防止墨水干燥。安装墨盒后，在不使用本产品的期间，请务必通过电源按钮关闭电源。请勿在电源打开时拉拔电源插头或使断路器跳闸。
如在铜版纸等墨水干燥较慢的防水纸上进行打印，可能会弄脏打印面。此外，如果在蜡光纸上打印，触摸时可能会在纸面上留下指纹或使手指沾到墨水。因此，在使用前，请选择不会造成打印脏污的纸张。
Epson建议使用Epson原装墨盒。为实现打印机的最佳性能，建议使用Epson原装墨盒。使用非Epson原装墨盒可能会影响到打印质量，也会阻碍打印机实现其最大性能。
Epson不能保证非Epson原装产品的质量 and 可靠性。对于使用非Epson原装产品引起的损伤或故障，即使在保修期内，也将收取修理费。
本产品的色彩调整以使用Epson原装墨盒为前提。使用非原装墨盒可能会导致打印质量下降。建议使用Epson原装墨盒。
请将墨盒放置到儿童接触不到的地方。建议将墨盒保管到阴暗处。
如墨盒长期保存在低温处，在使用前，请将其放置在室温环境下3个小时，以使其恢复温度。
如果在安装墨盒后移动或运输本产品，请在移动或运输过程中保留安装状态。

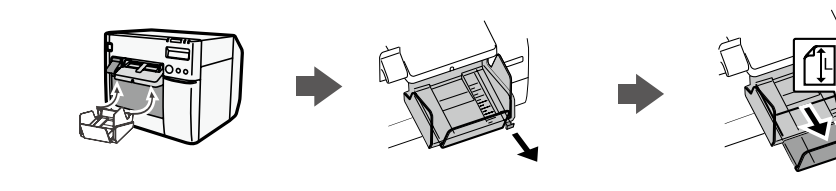
EN

CAUTION:
Do not touch the IC chip on the cartridge. Doing so may cause operating/printing malfunction.
This product uses ink cartridges equipped with an IC chip that monitors the amount of ink used by each cartridge. Cartridges are usable even if they are removed and reinstalled. However, if an ink cartridge in which little amount of ink remains is removed and reinstalled, it may not be usable. Some ink is consumed each time cartridges are installed because the product automatically checks their reliability.
Install all ink cartridges. Printing is not possible even if only one ink cartridge is missing.
Since ink cartridges are designed to stop the operation before ink runs out completely to maintain the quality of the print head, some ink remains in the used ink cartridge.
All the ink colors are consumed also for the maintenance operations when an ink cartridge is replaced and for print head cleaning.
Do not turn off the product or open the ink cartridge cover while charging ink (Power light is flashing). Opening the cover may cause the ink to be recharged, resulting in more ink being consumed. Also, it may cause printing malfunction.
Even for monochrome printing, all the ink colors are used in an operation designed to maintain the printing and print head quality.
Do not disassemble the ink cartridge. Doing so may cause ink to adhere eyes and skin.
Do not disassemble and remodel the ink cartridge. Doing so may cause printing malfunction.
Use of an old ink cartridge may result in reduced print quality. Use it up within six months after opening the package. The usage period for ink cartridges is printed on the packaging of individual ink cartridges.
If ink contacts your skin, eyes, or mouth, take the following actions.
-When it gets onto your skin, immediately wash the area with soap and water.
-When ink gets into your eyes, immediately flush them with water. Leaving the ink as is may result in bloodshot eyes or mild inflammation. If something is wrong, immediately consult with a doctor.
-When ink gets into your mouth, immediately spit it and consult with a doctor.
There may be some ink around the ink supply port on the removed ink cartridge. Take care so that it does not stain the desk or other surface.
Do not remove the ink cartridge, except when you replace it.
Do not open the ink cartridge package until you are ready to install it in the product.
Open the ink cartridge cover, and wait at least 4 seconds until internal operations stop. If you take out the ink cartridge in less than 4 seconds, there is a risk that the ink may spurt out.
Do not shake the ink cartridge too hard. The ink cartridge may leak if you shake it around too much or push the sides strongly.
Do not allow foreign objects to fall into the cartridge installation section. Doing so may cause printing malfunction.
When ink is charged for the first time (right after purchase), ink is consumed for filling the print head nozzle (ink discharge holes) to get ready for printing. That is why the number of the printable sheets may be fewer than for the cartridges to be installed later.
Dispose the ink cartridges properly following the law or regulations of your country and area.
If you turn the power off the product using the power button, the print head is automatically capped, which prevents the ink from drying. After installing the ink cartridges, be sure to turn the power off using the power button when you are not using the product. Do not pull out the power plug or trip the breaker while the power is on.
Printing on water-repellent paper such as art paper, which is slow-drying, may cause print stains. Also, printing on glossy paper may cause finger prints on the paper or ink may adhere to your fingers when you touch it.
Select paper not to cause print stains before use.
Epson recommends the use of genuine Epson ink cartridges. For the best performance of the printer, it is recommended to use genuine Epson ink cartridges. Use of non-genuine Epson ink cartridges can adversely affect the printing quality and prevent the printer from realizing its maximum performance. Epson cannot guarantee the quality and reliability of non-genuine Epson products. Repairs for any damage or breakdown of this product due to the use of non-genuine Epson products will not be free of charge even if the warranty period is still valid.
Color adjustment of the product is based on the use of genuine Epson ink cartridges. Use of non-genuine ink cartridges may result in reduced print quality. Use of genuine Epson ink cartridges is recommended.
Keep ink cartridges out of the reach of children.
A cool and dark place is recommended to store ink cartridges.
If the ink cartridge is stored in a cold place for a long period of time, let it warm up at least 3 hours before using it.
If moving or transporting the product after the ink cartridges are installed, leave them installed during the moving or transporting process.

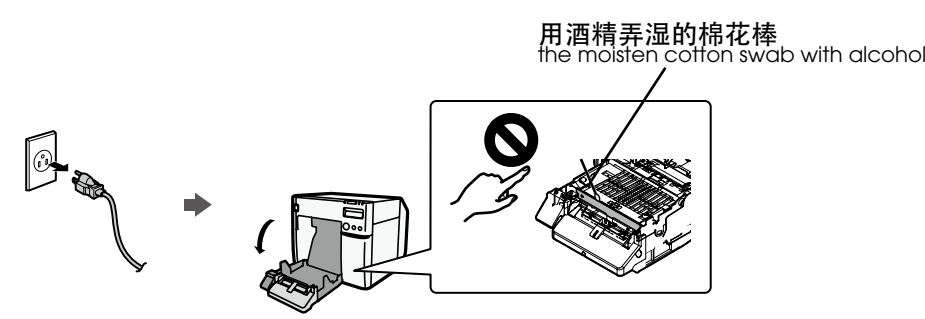
7 安装维护箱 Installing the maintenance Box



8 安装 / 调节排纸托盘 Attaching/Adjusting the Paper Ejection Tray



9 清洁自动裁纸器 Cleaning the Autocutter



10 开放源代码软件许可 Open Source Software License

<http://xxx.xxx.xxx.xxx/OSS/copy.html> <http://xxx.xxx.xxx.xxx/OSS/licenseterm.html>

SC
可访问上述网址查看开放源代码软件程序（包括本打印机产品）的一览和各许可的许可协议全文。
* 请在网址中的下划线部分输入各打印机的IP地址。

EN
The list of open source software programs included with this printer product and the whole license agreements of each license can be found in the above URL.
* For the underlined part in the URL, input each printer's IP address.

11 规格 Specification

SC		
打印方法	串行喷墨, 点阵式 四色打印	
进纸	正向和反向摩擦进纸	
打印纸	种类	普通纸、高级纸、普通纸标签、无光泽涂布纸、无光泽涂布纸标签、人造纸标签、医用腕带纸、蜡光纸标签
	类型	连续式收据纸 (带/ 不带黑色标记) 卷筒标签纸 模切标签纸 (带/ 不带黑色标记) 医用腕带纸
	形式	卷筒式记录纸, 折叠式记录纸
墨盒	独立分体式墨盒 (型号: SJIC24P)	
接口	USB 接口 (USB 2.0 高速) Ethernet 接口(100 Base-TX/10 Base-T)	
电源	专用AC 适配器, K (型号 : M248A) 供电电压: DC 42 V 额定电流: 0.85 A	
温度和湿度	打印	10 至 35°C {50 至 95°F} 20 至 80% RH (无冷凝)
	存放	包装时: -20至60°C {-4至140°F}, 5 至85%RH (无冷凝, 未装入墨水) (在-20°C或60° C {-4 或140°C} 时: 最多120小时) 装有墨水时: -20至40°C {-4至104°F} (在-20°C {-4°F} 时: 最多120小时) (在0至30°C {32至86°F} 时: 最多6个月) (在40°C {104°F} 时: 最多1个月)
总尺寸 (H×W×D)	310×283×261mm {10.27×12.20×11.14"} (不包括突起部分)	
重量	约12.0kg {26.45 lb} (不包括墨盒、维护箱、AC适配器以及卷筒式记录纸)	

EN

Printing method	Serial ink jet, dot matrix four-color printing	
Paper feed	Forward and reverse friction feed	
Paper	Category	Plain, Fine paper, Plain label, Matte, Matte label, Synthetic label, Wristband, Glossy label
	Type	Continuous paper (with/without black marks) Label roll paper Die-cut label paper (with/without black marks) List band
	Form	Roll paper, fanfold paper
Ink cartridge	Individual Ink cartridge (Model: SJIC24P)	
Interface	USB interface (USB 2.0 High-speed) Ethernet interface (100 Base-TX/10 Base-T)	
Power supply	AC adapter, K (model: M248A) supply voltage: DC 42 V Rated current: 0.85 A	
Temperature and humidity	Printing	10 to 35°C {50 to 95°F} 20 to 80% RH (No condensation)
	Storage	When packed: -20 to 60°C {-4 to 140°F}, 5 to 85%RH (No condensation, ink not loaded) (At -20°C or 60°C {-4 or 140°F}: up to 120 hours) When ink loaded: -20 to 40°C {-4 to 104°F} (At -20°C {-4°F}: up to 120 hours) (At 0 to 30°C {32 to 86°F}: up to 6 months) (At 40°C {104°F}: up to 1 month)
Overall dimensions (W × D × H)	310 × 283 × 261 mm {10.27 × 12.20 × 11.14"} (The protrusion excluded)	
Mass	Approximately 12.0 kg {26.45 lb} (Not including the ink cartridge, maintenance box, AC adapter, and roll paper)	