

T3200

Data Sheet
Inkjet Head T Series



1. PrecisionCore Technology

- a. MEMS manufacturing and thin film piezo technology enable high precision and a high nozzle density, creating compact, high-speed, high-quality print heads with excellent image quality.
- b. Epson's unique precision MEMS nozzles and ink flow path, ensure that perfectly round ink droplets are placed accurately and consistently.

2. Support for grey scale

Epson's unique Variable Sized Droplet Technology (VSDT) delivers smooth graduations by ejecting droplets of different volumes.

3. High durability

PrecisionCore print heads have proven durability and extended service life demonstrated by Epson's own industrial printers.

4. built-in heater

The T3200 and T1600 are the first printheads in the Epson PrecisionCore series to have a built-in heater. The heater improves the stability of drop ejection.

5. Up to 4 colours in a printhead (T3200 only)

The T3200 can eject up to 4 colours from a single printhead. This makes alignment between colours simple and saves time when installing or replacing print heads.

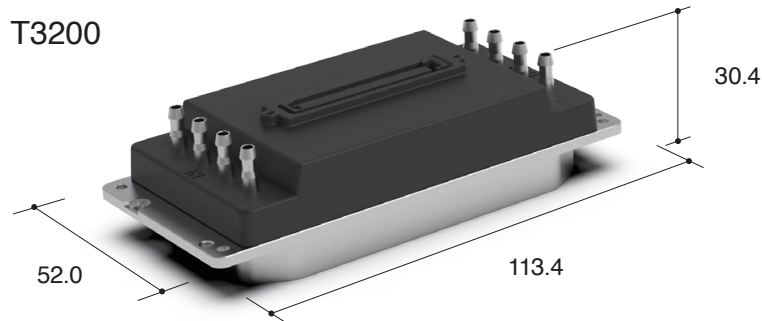
Product Specifications

Product name		T3200-U3
Ink type	UV	
Type	PrecisionCore MicroTFP printhead	
Width × Depth × Height*	113.4 × 52.0 × 30.4 mm	
Weight*	328 g	
Number of nozzle	3200 (Net:3176)	
Nozzle pitch / nozzle row	1/300 inch	
Nozzle rows	4 rows	
Nozzle Resolution	300 npi/row 600 npi/2 rows	
Max. number of colour inks	4 colours	
Effective print width	67.2mm (2.65inches)	
Droplet ejection performance*	Binary	7.5 pl at 48 kHz
	4 levels grey scale	6.2, 9.5, 15.6pl at 24 kHz
Viscosity range*	7-8 mPa·s	
Ink recirculation	Not available	
Internal heater	Available	
Positioning Mechanism	Reference hole	

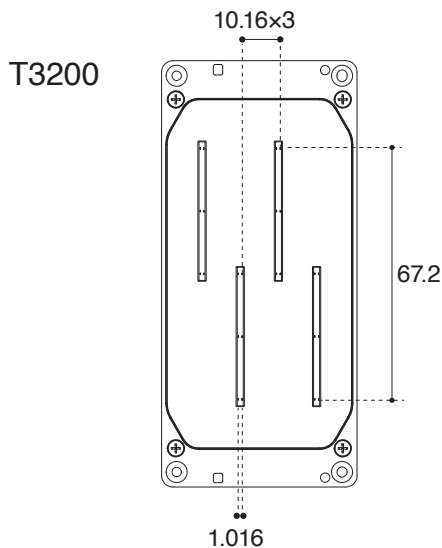
* Combining the various grey scale and the droplet size can be realized by Epson unique waveform design.

• Figures are reference values

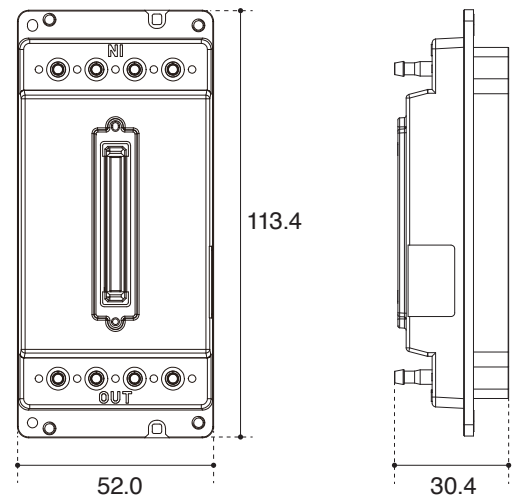
Product size (mm)



Nozzle (mm)



External dimensions (mm)



- Specifications and designs in this catalog are current as of March, 2022.
 - Product specifications and document description are subject to change without notice.

EPSON CHINA

F4 Tower 1, China Central Place, 81 Jianguo Road, Chaoyang District, Beijing, 100025, PRC
www.epson.com.cn 官方微信/微博: 爱普生中国
 服务导购热线: 400-810-9977 爱普生官方天猫旗舰店: epson.tmall.com

图片仅供参考, 外观以实物为准。本说明若有任何细节之更改, 恕不另行通知。
 爱普生(中国)有限公司在法律许可的范围内对以上内容有解释权。



爱普生官方网站



爱普生官方微信



爱普生官方微博